

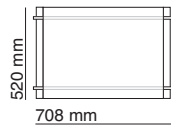
**Solitaire 1**  
Ausführung schwarz  
Black model



**Solitaire 4**  
Ausführung weiß  
White model

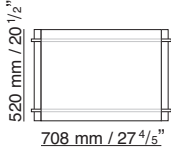
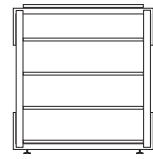
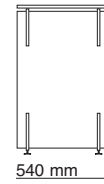
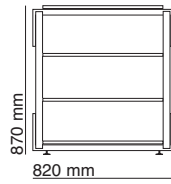


## CHARISMA AUDIO



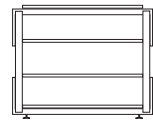
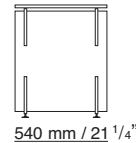
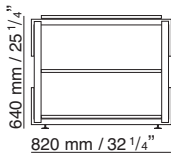
**Solitaire 1**

**Solitaire 1  
Plus Variante  
Plus Version**



**Solitaire 4**

**Solitaire 4  
Plus Variante  
Plus Version**



### DETAILS

- Glasstärke 20 mm Klarglas
- Tragkraft pro Ebene 70 kg
- Tragkraft Topplatte 150 kg
- Topplatte schwingungs-  
gedämpft gelagert
- Fachböden höhenverstellbar  
± 50 mm
- höhenverstellbare Tellerfüße

### DETAILS

- Clear glass: 20 mm (0.8") thick
- Load capacity per level: 70 kg / 155 lbs
- Top panel: 150 kg / 330 lbs. load capacity
- Top panel provided with vibration  
dampers
- Height-adjustable shelves: ± 50 mm / 2"
- Height-adjustable leveling feet

### ZUBEHÖR

- Lichtsystem
- Drehsystem
- Kabelspyder
- Kabeltunnel

### ACCESSORIES

- Lighting system
- Swivel system
- Cabel Spyder
- Wiring Tunnel

Alle Modelle erhältlich in zwei Oberflächenvarianten  
All models available in two surfaces

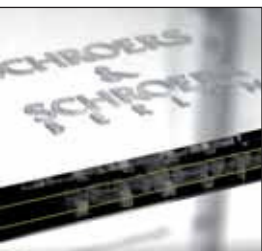
### Zubehör · Accessories

### OPTIONAL

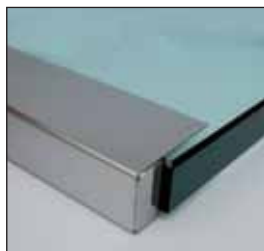
- Soundglas, 20 mm Klarglas

### OPTIONAL

- Soundglas, clear glass, 20 mm (0.8") thick



**Soundglas**  
**Soundglas**



**Lichtsystem**  
**Lighting Kit**



**Kabelspyder**  
**Cable Spyder**



**Kabeltunnel**  
**Wiring Tunnel**

### Tellerfüße Levelling feet

Alle Tellerfüße sind höhenverstellbar.  
All levelling feet are height adjustable.



### Topplatte Top Panel

Topplatte ist auf schwingungsabsorbierenden, rutschhemmenden Pads gelagert.

The top panel is provided with  
vibration dampers.

